



# PestPro IV Backpack USER'S MANUAL



## Safety Precautions

- Read owner's manual completely before operating this sprayer.
- Always use goggles, gloves, and protective clothing when using sprayer.
- Read and follow all instructions and cautions on label of products used in this sprayer.
- Never use flammable liquids, caustics, acids, or hot water in this tank.
- Do not leave sprayer in the sun when not in use.
- Always inspect hose and all hose connections before each use. A damaged hose, or loose hose connection can result in unintended exposure to the pressurized chemical, resulting in serious injury or property damage.
- Do not lift or carry sprayer by the hose, shut-off valve, or wand extension. Carry by the handle only.
- Do not pressurize with any mechanical device such as an air compressor, since this can create a dangerous pressure level and bursting of parts resulting in serious injury. Only use original pump.
- Do not store chemicals in this tank.
- Always release pressure when sprayer is not in use and before performing any maintenance.
- **Clean and rinse sprayer thoroughly after each use.**
- Never attempt to alter sprayer from original condition.
- Always use replacement parts from original manufacturer.



- To begin pressurizing, be sure shut-off lever is not depressed. Pump handle up and down in a smooth motion. Operating pressure is reached when pumping becomes difficult, which is no more than 5-7 full pumps. (Do not over-pressurize)

- Direct nozzle away from you and squeeze shut-off lever to begin spraying.

- To maintain pressure while spraying, operate pump handle every 8 sec. or as needed.

### Cleaning

- Fill the tank with cool, clean tap water. Replace the cap and tighten securely. (Never use hot water for cleaning)

- Agitate the tank to rinse the chemical from the tank walls.

- Remove the cap and empty the contents into gravel or bare soil.

- Refill the tank with clean tap water. Replace the cap and tighten securely.

- Pressurize the tank as described above.

- Direct the nozzle away from you and activate the shut-off for at least 30 seconds to clean the pressure chamber, hose and shut-off.

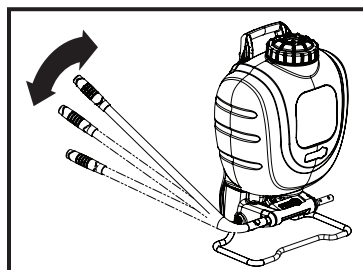
- Remove the cap and empty the contents into gravel or bare soil.

- Repeat steps 4 - 7 until thoroughly cleaned. Remove nozzle when flushing pump system. Clean nozzle before replacing.

## Operating Instructions

### Filling and Spraying

- Always refer to chemical manufacturer for proper mixture.
- Remove the cap from the tank.
- Make sure the filter basket is in place in the neck of the tank. The filter basket includes the seal and must be in place to prevent leaks.
- Fill the tank with cool water and chemical to the desired level.
- Reinstall the cap.



## Care and Maintenance

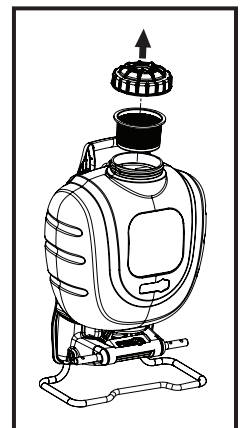
### Nozzle Maintenance

- If nozzle clogs, remove and disassemble the nozzle assembly.
- Clean the openings of any obstructions and reassemble.

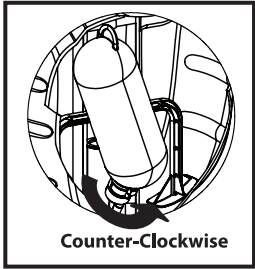
### Pressure Chamber Maintenance

**WARNING: Always depressurize sprayer before cleaning or replacing pressure chamber by activating shut-off and spraying out all pressure.**

- Remove the tank cap and strainer.
- Reach into the tank and turn the chamber 1/4 turn counterclockwise to unlock the chamber from the pump then remove chamber from tank.

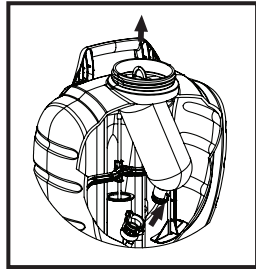


# Care and Maintenance



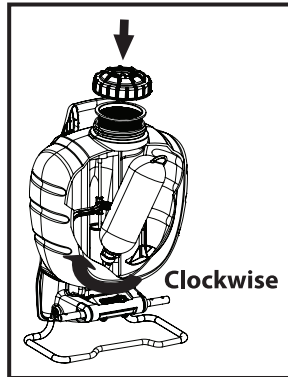
Counter-Clockwise

Unlock Chamber



Remove Chamber

- Rinse out any debris that may have accumulated in the chamber.
- Reinstall the chamber into the pump by aligning the tabs on the chamber with the slots in the pump, push firmly into pump and turn clockwise until pump stops.
- Reinstall the strainer and tank cap.



Clockwise

## Servicing the Tank

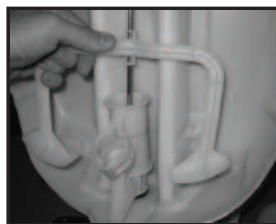
- Unscrew cap from tank. Remove and replace check valve.



- Remove pressure chamber as outlined in Pressure Chamber Maintenance section of the manual. Remove and replace o-ring. Lubricate o-ring with petroleum jelly.



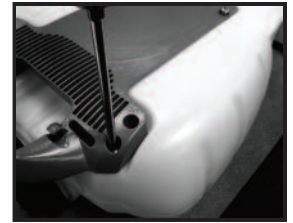
- Unsnap agitator from piston rod. Remove from tank.



- Position pump handle to the furthest downward position. Remove pump handle from sprayer.



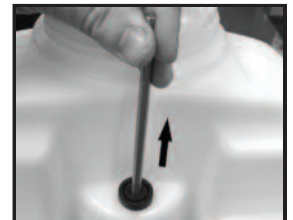
- Disassemble carry handle by removing the (6) screws.



- Remove hitch pin and lift pivot clip off of the piston rod.



- Pull upward to slide piston rod out of pump.



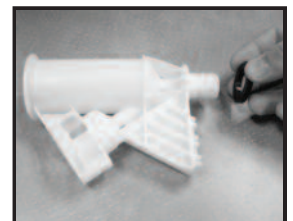
- While holding onto the pump, use an adjustable wrench to unthread pump nut from pump. Remove nut, hose and barb assembly.



- Inspect (2) o-rings on barb assembly. If damaged, replace hose assembly.



- Remove pump out of tank. Remove and replace gasket.

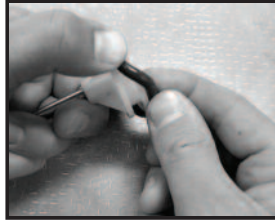


- Slide piston rod assembly down and out of grommet and remove from tank.



## Care and Maintenance

- Carefully remove and replace o-ring from piston. Lubricate o-ring with petroleum jelly.



- Remove grommet from tank using pliers to grasp the head of the grommet while flexing the grommet out of the hole in the tank. Press or tap new grommet into tank. Lubricate hole in grommet with petroleum jelly.



- Insert piston rod assembly into tank and through grommet.



- Reassemble pump with gasket into tank. Tighten pump nut securely with adjustable wrench while holding pump to maintain correct orientation. Push piston assembly into pump.



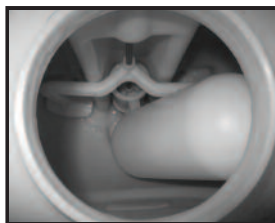
- Attach pivot clip to piston rod and insert hitch pin. Note orientation of piston rod must match the pivot clip. Reassemble carry handle onto tank. Tighten all (6) screws.



- To reinstall the agitator, line the notch up on the agitator with the swedge on piston rod and snap into place.



- Reinstall pressure chamber as outlined in the Pressure Chamber Maintenance section. Replace tank cap, filter and pump handle.



## Trouble Shooting

**Problem:** Sprayer will not build pressure

- Inspect:**
- Pressure chamber installed into pump
  - Dirty, damaged or worn pump or chamber o-ring
  - Dirty poppet in pump

- Solution:**
- Install pressure chamber as described in Pressure Chamber Maintenance section
  - Clean and lubricate or replace o-rings as described in Servicing section
  - Clean sprayer as described in Cleaning section

---

**Problem:** Sprayer will not spray

- Inspect:**
- Sprayer pressurization
  - Shut-off clogged
  - Nozzle clogged

- Solution:**
- Pressurize sprayer as described in Pressurizing and Spraying section
  - Clean shut-off as described in Shut-off Maintenance section
  - Clean nozzle as described in Nozzle Maintenance section

---

**Problem:** Sprayer leaks from the bottom of the tank

- Inspect:**
- Loose pump nut
  - Damaged or worn o-rings or seals

- Solution:**
- Tighten pump nut as described in Servicing section
  - Replace o-rings and seals as described in Servicing section

---

**Problem:** Sprayer leaks where piston rod enters top of tank

- Inspect:**
- Dirty, damaged, or worn grommet

- Solution:**
- Clean and lubricate hole in grommet or replace grommet as described in Servicing section

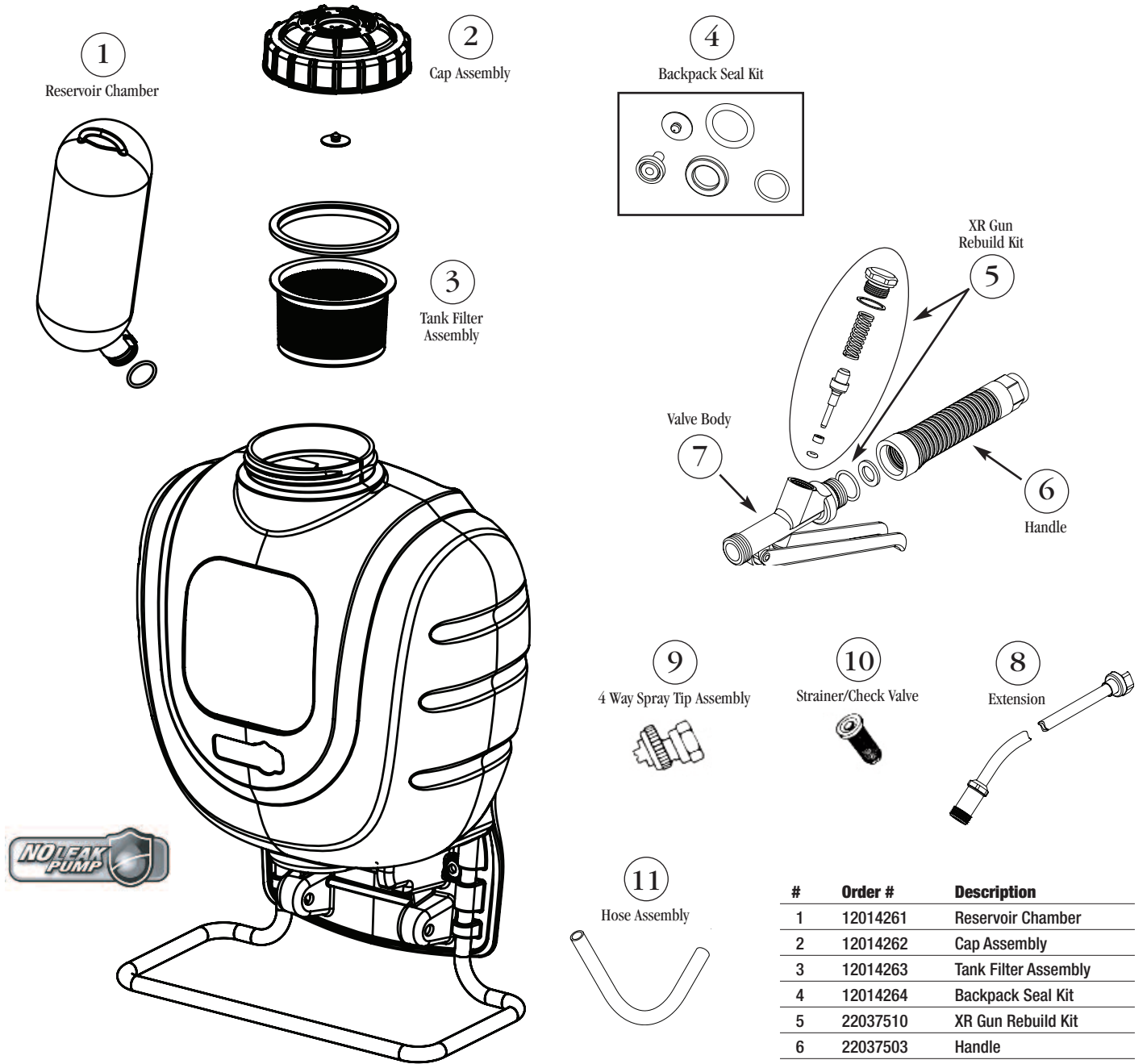
---

**Problem:** Pump handle is difficult to operate

- Inspect:**
- Swollen or damaged pump piston o-ring
  - Dirty, dry or damaged grommet

- Solution:**
- Clean and lubricate or replace o-ring as described in Servicing section
  - Clean and lubricate hole in grommet or replace grommet as described in Servicing section

# PESTPRO IV BACKPACK



For more detailed maintenance and servicing instructions, visit the B&G website at [www.bgequip.com](http://www.bgequip.com)

#	Order #	Description
1	12014261	Reservoir Chamber
2	12014262	Cap Assembly
3	12014263	Tank Filter Assembly
4	12014264	Backpack Seal Kit
5	22037510	XR Gun Rebuild Kit
6	22037503	Handle
7	22037501	Valve Body
8	22045600	Extension
9	22049451	4 way spray tip assembly
10	22032551	Strainer/Check Valve
11	33000309	Hose Assembly

B&G Help Line  
**800-544-8811**



135 REGION SOUTH DRIVE • JACKSON, GA 30233  
 Toll Free 800-544-8811 • Phone 678-688-5601  
[www.bgequip.com](http://www.bgequip.com) • Fax 678-688-5633