



# CHARNDRITE

## Perforce 500

### Residual Insecticide



#### PRODUCT TECHNICAL BROCHURE

#### PRODUCT DETAILS

**Active Constituents:**  
Inert ingredients:  
Formulation type:  
Insecticide Mode of Action:  
Target Pests:

APVMA Registration Number:



**Pemethrin 500g/L Emulsifiable Concentrate**

**SOLVENT + Emulsifiers**  
**SOLVENT BASED FORMULATION FOR DILUTION WITH WATER**  
**CONTACT AND RESIDUAL**

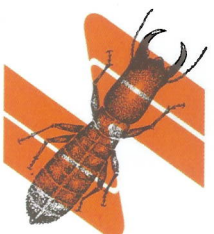
**Broad range of insects including:** Anger Beetles, Powder Post Beetles, Pinhole Borers, Furniture Beetles, Termites, Quarantine Timber Insect Pests  
Ants, Cockroaches, Fleas, Spiders, Silverfish, Moths, Mosquitoes, Biting Flies  
Lawn Armyworm

63797

#### PRODUCT SITUATIONS

- Felled logs, poles, posts and sawn timber
- Remedial treatment of timber in buildings
- Sawn and round timbers for treatment by vacuum impregnation
- Household and industrial situations
- Lawns, ovals, amenity areas
- Repellent treatment of clothing of ADF personnel in accordance with the Australian Defence Force

*Consistent Quality Products result in less re-claim calls and more PROFITS!*



# CHARNDRITE

## Perforce 500

### Residual Insecticide

#### DIRECTIONS FOR USE:

Application	Pest	State	Rate	Critical Comments
Felled logs, poles, posts and sawn timber	Anger beetles (family/Bostrychidae), Powder post beetles (family/Scolytidae), Furniture beetles (family/Cerambycidae), Termites (family/termitidae)	All States	20ml/10L diluted in 10L of water	1. Logs, posts and poles (especially when newly felled) use backpack or pump sprayer at 200 ml per m <sup>2</sup> . 2. Sawn timber apply at 1 L per 20m <sup>2</sup> of surface area.
Remedial treatment of timber in buildings	Drywood termites, Carpenter termites, C. demeticus	QLD, NSW, NT only	40 ml/10L non-staining oil or kerosene	Applicable only to surfaces which will absorb the solution, have unvarnished, painted or polished surfaces (need to be sanded down to ensure penetration of the solution). Apply at 1.020 m <sup>2</sup> of surface area or to the joint of run-off. Oil damaged areas and reject solution until timber is unable to absorb more liquid. Total oil filtered areas (as indicated by expansion of frass) for maximum effect. Average application may be sufficient. Continued expansion of frass may be due to movement of timber.
Sawn and round timbers for treatment by vacuum impregnation	Anger beetles (family/Bostrychidae), Furniture beetles (family/Cerambycidae), Termites (family/termitidae)	All States	12 ml/100kg timber	
Groundline treatment of power poles	Sulphurean termites (including/Opotermes spp)	All States South of Top of Capricorn except Australia WA, NT only	40 ml in 10L kerosene or 100 ml in 10L	1. Calculate uptake of solution by wetness traversing a shallow depth. 2. Dilute as required for treated section into the glue. Add sufficient Charndrite Perforce 500 residual insecticide to treat weight of the component only of the board.
500g/L Sawn and round timber for treatment by vacuum impregnation	Sulphurean termites (including/Opotermes spp), Anger beetles (family/Bostrychidae), Furniture beetles (family/Cerambycidae), Termites (family/termitidae), Drywood termites, Carpenter termites, C. demeticus, Great termites	QLD, NSW, VIC, SA WA, NT only	300 ml per 4m <sup>2</sup> dry wetness (per 180 g per m <sup>2</sup> per m <sup>2</sup> ) 0.25 ml/kg dry timber (per 0.13 g per m <sup>2</sup> ) 0.7 liter (per 0.13 g per m <sup>2</sup> )	1. Calculate the uptake of solution by wetness traversing a shallow depth. 2. Dilute as required to ensure the mean target application of Charndrite Perforce 500 Residual Insecticide (in dry wetness). (Dip uptake of individual veneers will vary hence the average uptake should be assessed rather than of individual veneers on the basis of split or dry throughput.
Processing and manufacture of softwood plywood	Termites (including/Opotermes spp), Anger beetles (family/Bostrychidae), Furniture beetles (family/Cerambycidae), Termites (family/termitidae), Drywood termites, Carpenter termites, C. demeticus, Great termites	QLD, NSW, VIC, SA WA, NT only	240 ml/m <sup>2</sup> dry wetness (per 120 g per m <sup>2</sup> ) 25.25ml/m <sup>2</sup>	1. Calculate the uptake of solution by wetness traversing a shallow depth. 2. Dilute as required to ensure the mean target application of Charndrite Perforce 500 Residual Insecticide (in dry wetness). (Dip uptake of individual veneers will vary hence the average uptake should be assessed rather than of individual veneers on the basis of split or dry throughput.
Processing and manufacture of hardwood plywood	Anger beetles (family/Bostrychidae), Furniture beetles (family/Cerambycidae), Termites (family/termitidae), Drywood termites, Carpenter termites, C. demeticus, Great termites	All States	30 ml/10L	All dilutions should be applied to the joint of run-off. That is, at the rate of 5 L of prepared spray per 100 to 150 m <sup>2</sup> (depending on the porosity of the substrate) (1.7000 sulphurean termites, centric, centric, longwood, etc.) also on the spray and hence more spray is needed to deliver the required uptake. Spray in crevices, cracks and other insect harbourages. Apply to carpets and other fibres at 25 ml spray mix per m <sup>2</sup> and to other surfaces at 10 ml spray mix per m <sup>2</sup> .
Household and industrial situations	Anger beetles (family/Bostrychidae), Furniture beetles (family/Cerambycidae), Termites (family/termitidae), Drywood termites, Carpenter termites, C. demeticus, Great termites	All States	Initial: 200 ml in 5 L water Residual: 100ml in 1 L water	The dilution rate depends on the water uptake rate of the material. Dip thoroughly for 30 minutes, drain then dry, preferably, and repeat on a second surface. Mix should not be hung up to drain.
Lawns, ovals, amenity areas	Mosquitoes, termites	All State	(i) 15 ml in 500 ml of water (ii) 15 ml in 2 L of water	Dip treated for two minutes, pre-dry on a horizontal non-absorbent surface before hanging up to dry to prevent excessive dripping.
Repellent treatment of clothing of ADF personnel in accordance with the Australian Defence Force	Lawn armyworm (Spodoptera maurina)	QLD, NSW only	100-200 ml/1500L water (per 100 ml/1000L spray 600)	Apply at first sign of damage as and when required.

**NOT TO BE USED FOR ANY PURPOSE, OR IN ANY MANNER, CONTRARY TO THIS LABEL UNLESS AUTHORISED UNDER APPROPRIATE LEGISLATION.**



**Sherrwood Chemicals Australasia Pty Ltd**  
Sherrwood Chemicals Australasia  
ABN: 35 136 893 630  
Level 3, 1080 Hay Street, WEST PERTH 6105  
AUSTRALIA  
Email: sales@sherrwoodchemicals.com.au  
www.sherrwoodchemicals.com.au



**Globe Australia Pty Ltd**  
ABN: 75 001 429 714  
Tel: 1800 244 300  
Email: sales@globeaustralia.com.au  
www.globeaustralia.com.au



**Sherrwood Chemicals Australasia Pty Ltd**  
Sherrwood Chemicals Australasia  
ABN: 35 136 893 630  
Level 3, 1080 Hay Street, WEST PERTH 6105  
AUSTRALIA  
Email: sales@sherrwoodchemicals.com.au  
www.sherrwoodchemicals.com.au

*"Consistent Quality Products Through Quality Process Management"*