

PROTECTIMBER



PROTECTS



Photo courtesy of Phillip Hadlington

PREVENTS

**DAMAGE TO YOUR LARGEST
INVESTMENT...**

**YOUR HOME
YOUR HOME**

Mabon's



TIMBER PROTECTION PTY LTD

P.O.BOX 3097

BRACKEN RIDGE Q 4017

Ph 07 3261 5167 Fax 07 3261 5770

Email mabons@powerup.com.au

www.mabonstimberprotect.com.au

Free call 1800 815 477

PROTECTIMBER

52 g/l Boron (B) present as Disodium Octoborate Tetrahydrate with 12g/l Benzalkonium Chloride in a solvent that enables easy diffusion into timber and other porous surfaces.

PROTECTIMBER is an innovative clear fungicidal and insecticide based product specifically made for the do it yourself market (D.I.Y.), home improver and builder for many applications around your home.

PROTECTIMBER eliminates existing infestations and depending on circumstances provides long term protection against:

TERMITES: subterranean (white ants)
BORERS: powderpost beetles (lyctus), anobiid beetles, (common furniture beetle), drywood longicorn borers, common ambrosia beetles

WOOD DECAY: brown rot, white rot and decay
MOULD, ALGAE, SLIME, MOSS AND LICHENS.



Lyctus beetle



Coptotermes Spp termite

Photograph by courtesy of Queensland Forest Research Institute, Department of Primary Industries Queensland.

PROTECTIMBER's active ingredient is Disodium Octoborate Tetrahydrate, is toxic to many insects, decay organisms and some forms of bacteria. Although the efficacy of borates (salts containing the element Boron) against insects such as termites and timber boring beetles on contact is well documented (in fact governments throughout the world have been using these products for well over 35 years) the actual mechanism is not understood completely. The most accepted theory is that boron kills the intestinal flora, which allows the insects to digest cellulose. Without them these insects could essentially starve to death.

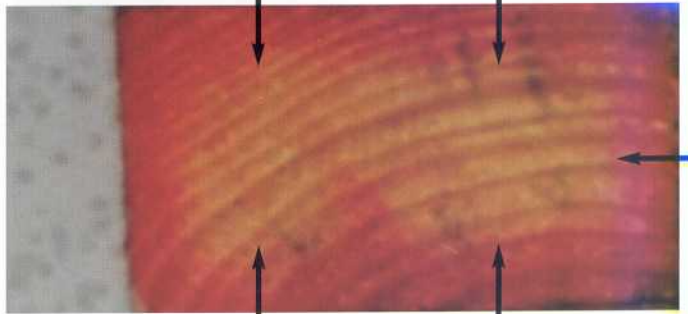
Where **PROTECTIMBER** has been applied; those insects that eat the timber also ingest the active ingredient boric acid. Once individual members of termite colonies begin to die after feeding on a treated timber surface, the rest of the colony usually stops feeding on that same source. Therefore borate treated timber maybe avoided by those members of the colony still alive.

Older timber borer larvae already in timber at the time of treatment may occasionally burrow deep into the timber ahead of the diffusing boron and emerge sometimes after treatment. This should not occur frequently enough to cause additional structural damage to any timber section.

PROTECTIMBER readily diffuses into all types of timber, including softwood and hardwoods with the

help of sufficient moisture. Where the moisture levels are at higher levels such as 18% **PROTECTIMBER** will move much further into the heartwood.

PROTECTIMBER when coated on the surface of timber enters the timber within minutes taking the active ingredients further and deeper into the timber diffusing through the entire piece provided the correct application is made over time.



Boron diffusion shown via curcumin test after 4 months at approx. 85% humidity.

How quickly diffusion occurs depends on timber moisture, timber species and environmental conditions.



PROTECTIMBER is well suited to control wood decay or dry rot and insects as they too exist in timber mainly due to high moisture levels. On new timber you should use Cellavit General Purpose Clear or Cellavit Marine Grade Green (as it will keep moisture out of timber solving these problems right from the start.

PROTECTIMBER is non corrosive to metals, is colourless and almost odourless. Timber can be nailed, screwed, cut or sawn without detrimental effect. It is a good idea to dip bolts and other large fasteners in **PROTECTIMBER** to prevent decay around the insertion point or in the case of bolts the bolthole.



Internally this house can be protected from decay and insect attack by spraying or painting on **PROTECTIMBER**.

PROTECTIMBER can be burnt and disposed of easily at landfill. In fact used at much heavier rates of application than is on the label is used as a handy fire retardant.

PROTECTIMBER treated surfaces can be painted over when dry with most finishes and stains, water repellents such as Cellavit products and paints

Make sure however that the surface is dry and if any white residue is on the surface of the timber wipe off with a damp cloth before water based paints and other finishes are applied.

PROTECTIMBER in protected situations, like internal structural timbers will last the life of the building.

PROTECTIMBER is ideal for wood carving, turning and sculpturing, as a part from the normal wood dust is safe to use to protect your pieces of timber from decay and in particular lyctus borers.



A badly decayed step cleaned ready for PROTECTIMBER application.

APPLICATION TABLE: ALL STATES

PROTECTIMBER can be applied by brush, roller, dipping or spraying.

PREVENTATIVE TREATMENT 10 mL of PROTECTIMBER per 1000 cubic cm			
REMEDIAL/ INSECTICIDE 20 mL of PROTECTIMBER per 1000 cubic cm			
SITUATION	RECOMMENDED RATE PER SQUARE METRE		
	0-25 mm depth	25-50 mm depth	50-100 mm depth
PREVENTION: Timber, masonry, brickwork, concrete	250 mL	500 mL	1 litre
REMEDIAL INSECTICIDAL: Timber, masonry, brickwork, concrete	500 mL	1 litre	2 litres

NOT TO BE USED FOR ANY PURPOSE OR IN ANY MANNER CONTRARY TO THIS LABEL UNLESS AUTHORISED UNDER APPROPRIATE LEGISLATION.

DIRECTIONS FOR USE:

RESTRAINTS

- NOT TO BE USED on surfaces which come into direct contact with foodstuffs.
- NOT TO BE USED on roofs for collection of potable water.
- NOT TO BE USED on surfaces which come into contact with the ground.
- NOT TO BE USED on surfaces exposed to rain unless **Cellavit® General Purpose Clear water repellent** or other suitable protective finish is used to seal the PROTECTIMBER into the timber.

PROTECTIMBER is supplied ready to use for in-situ, remedial, preventative treatment as per application table.

If the surface to be treated is very dry, the penetration of **PROTECTIMBER** will be enhanced if the surface is sprayed with water prior to treatment. **This is always necessary when using the remedial or insecticidal rate** for the treatment of aged timbers with very dry surfaces. **PROTECTIMBER** can be applied immediately after the water has been absorbed by the surface.

When using high rates (remedial/insecticidal), it will be necessary to apply via two coatings with two to three hour interval approximately.



Termite damage. Beyond repair - don't let this happen to you.



Photo courtesy of Phillip Hadlington

Since **PROTECTIMBER** is applied directly from the container to the timber it can be used in areas where environmental contamination's of concern. The active ingredient is an organic salt and once in place it will not decompose or volatilize out of the timber. However leaching of the boron salts can occur when the treated surface is in touch with water such as in flooding or continuous rain. Hence sealing the timber surface in these circumstances is absolutely essential.

PROTECTIMBER is very effective in controlling mould, algae, slime, lichens and fungi on timber, masonry, concrete and other porous surfaces where surfaces are continually exposed to damp conditions.

When applying **PROTECTIMBER** to surfaces under heavy attack from the above pathogens it will be best to clean them off the affected surface with a high-pressure water sprayer or alternatively using a stiff brush. Lichens in particular if not removed first will have dead embedded roots which are extremely hard to get off. Where the surface is not cleaned first you will find that the end result will not be evident immediately, however **PROTECTIMBER** is doing its job and for quite a few years as evident in the photos below.



The equivalent product to **PROTECTIMBER** was applied with a hand held sprayer in 1993.



Two years later the same roof.



The same roof another year on. The algae started to reappear lightly in late 1997.

- ✓ **PROTECTIMBER** is safe for both people and mammals to use. It is poisonous however to timber insects and fungi and moulds.
- ✓ **PROTECTIMBER** is environmental friendly.
- ✓ **PROTECTIMBER** is a natural occurring mineral that fixes in to the timber, does not volatize off. It however will leach.
- ✓ **PROTECTIMBER** controls a wide range of timber pests and fungi that causes decay and rots.
- ✓ **PROTECTIMBER** also controls surface moulds, slime, algae and lichens. It has a long residual depending on the porosity of the building material.
- ✓ **PROTECTIMBER** is the ideal D.I.Y product. Can be applied by anyone.
- ✓ **PROTECTIMBER** is suitable for all types of timbers in all types of buildings.
- ✓ **PROTECTIMBER** is safe to use for wood turners and wood working use.
- ✓ **PROTECTIMBER** is easily applied straight from the can.
- ✓ **PROTECTIMBER** can be painted over after it is dry with water based paints and repellents.
- ✓ **PROTECTIMBER** comes in convenient easy to use packaging.
- ✓ **PROTECTIMBER** is the ideal product for decay, termites and borers as it follows the moisture in the timber as they do.

Product information and Material Data Sheet for safety directions are available from the website or from Mabon's Timber Protection P/L.

PACK SIZES:
1, 5, 10, 200 litres

Photos for brochure and label are courtesy of Phillip Hadlington, from his book "URBAN PEST CONTROL IN AUSTRALIA" and his photo library.

Photos on label and brochure from Department of Primary Industries publication "PESTS OF TIMBER IN QUEENSLAND" by B.C. Peters, J. King and F.R. Wylie.

All other photos belong to Brian Mabin and are copyright.

AVAILABLE FROM

